

Big City Plus - Mexico City Plus



-  **Option A**
Dark Blue & Orange (shown)
-  **Option B**
Purple & Yellow
-  **Option C**
All Green

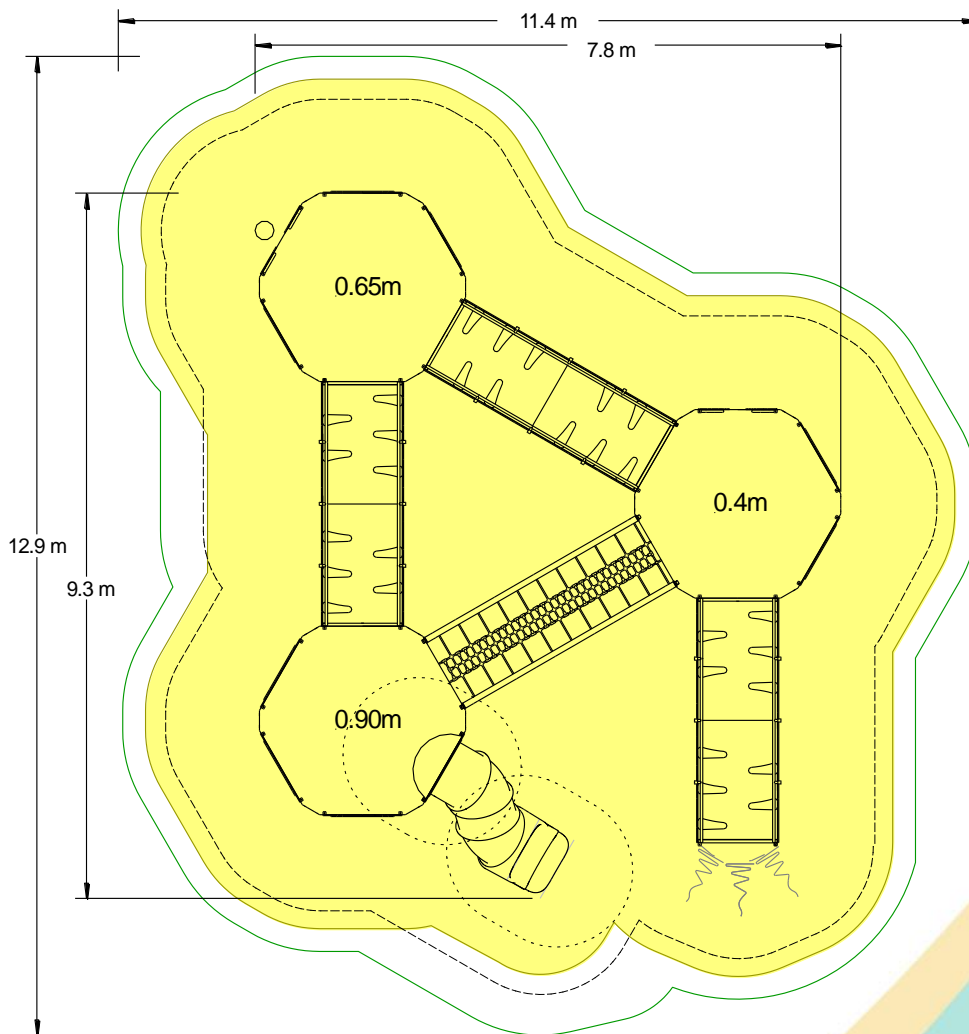
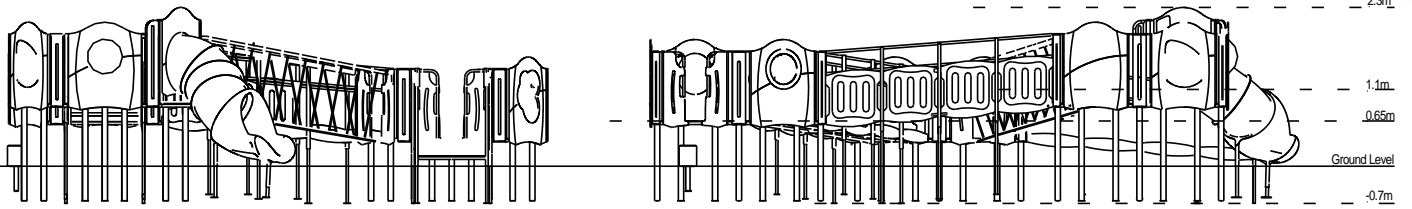
Code – BC/MEX
Age
5-12 years
Materials
Stainless Steel
Compact Grade Laminate (CGL)
Nylon Steel Cored Rope
Various Plastic Mouldings
LLDPE Slide

A junior modular tower system comprising of:

- Ramp Access 400mm Tower
- Ramp Access 650mm Tower
- Ramp Access 900mm Tower
- Ramp Access Net
- Bottom Ramp
- Middle Ramp
- Top Ramp
- 200mm Transfer Platform
- Ball Blast Play Panel
- 2 x Musical Above Play Panels
- 2 x Bubble Above Play Panels
- 2 x Tactile Above Play Panels
- Spin Ball Play Panel
- Plastic Tube Slide (1.1m)
- Ramp Access Step Off No Step
- Ramp Access Step Off With Step

Technical Information		
Equipment Dimensions		
Length / Width / Height	9.3m x 7.8m x 2.3m	
Surfacing and Area Required		
Recommended Minimum Space L/W/H	12.9m x 11.4m x 4.8m	
Max Gradient of Ground	1 in 50	
Free Height of Fall	1.1m	
Impact Area	95.51m ²	
Synthetic Area (i.e. EPDM / Wet Pour / Synthetic Grass etc.)	89.48 ²	
Loosefill at 150mm (i.e. Bark / Cushionfall / Sand)	17m ³	
GrassLok Tiles	118m ²	
Installation Information		
	SGF	SF (if different)
Installation Time	2 Persons 33 Hours	
Overall Weight	1980kg	
Heaviest Part	46kg	
Largest Part	2.6m x 1.0m x 1.0m	
Longest Part	2.6m	
Concrete Required	2.065m ³	2.786m ³
Certified to ASTM F1487		

[Click here for more information & downloads](#) 



-  Recommended Minimum Space
-  Impact Area
-  Free Space
-  Unit Spacing Boundary

[Click here for more information & downloads](#)

